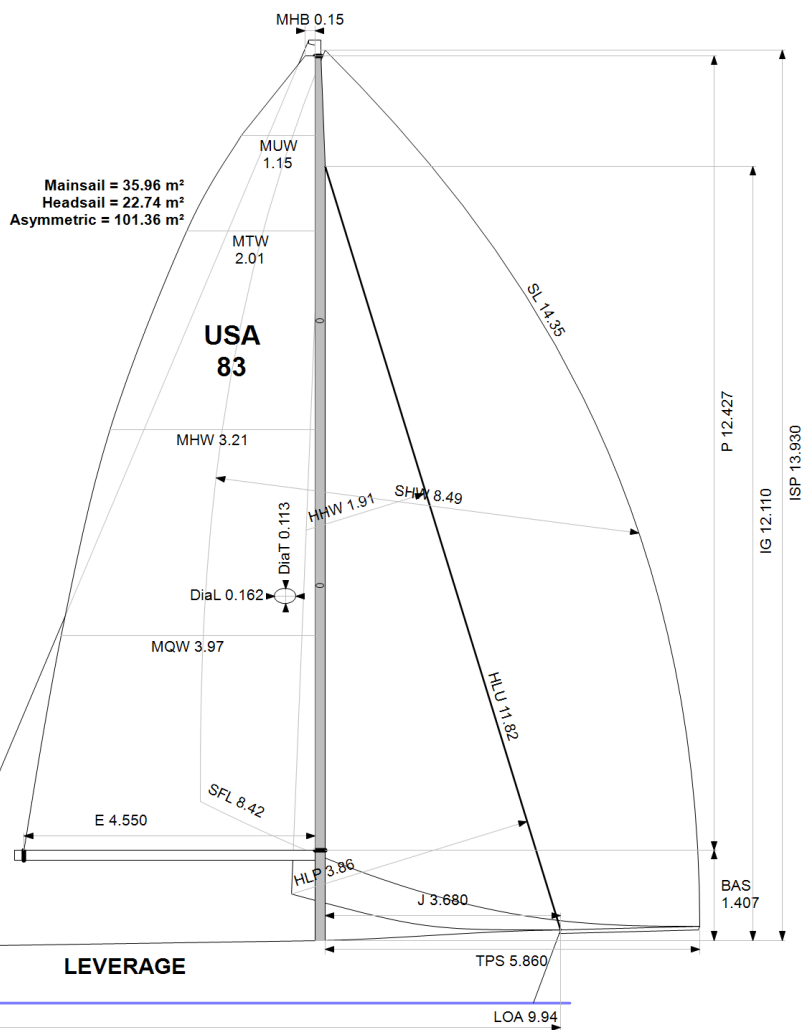


APH ToD: **513.3** CDL: **9.266**

APH ToT: **1.1689** CertNo: **US8310**



BOAT

Class **Flying Tiger 10**
Designer **Robert H. Perry**
Builder **Hansheng Yachts**
Age date **02/2007**
Series date **01/2007**
Offset file **FlyTgr10-2.off**
Data file **USA83-FT10**

HULL

Length Overall **9.940 m**
Maximum Beam **2.792 m**
Draft **2.272 m**
Displacement **2,189 kg**
DLR **3.3877**
IMS Division **Performance**
Dynamic Allowance **0.000%**
Age Allowance **0.487%**

PROPELLER

Installation **No Propeller**
Type **N/A**
Diameter **N/A**

CREW

Maximum weight **550 kg** (declared)
Minimum weight **420 kg** *when applied
Non Manual Power **No**
Crew Arm Extension

SAIL AREAS (m²)

	Measured	Rated
Mainsail	35.96	37.11
Headsail Luffed	22.74	22.74
Headsail Flying		
Symmetric		
Asymmetric	101.36	101.36

(All asymmetric spinnakers with SHW/SFL > 85%)

STORM SAIL AREAS (m²)

Trysail **9.90**
Storm Jib **7.64**
Heavy Weather Jib **20.62**

SAIL LIMITS

Headsails **5**
Spinnakers **4**

STABILITY

Righting Moment **N/A**
Stability Index **N/A**

The owner and any other person in charge is responsible that boat is complying with her certificate in accordance with RRS 78.1 and ORC Rule 304.

Rated boat velocities in knots

Wind Velocity	6 kt	8 kt	10 kt	12 kt	14 kt	16 kt	20 kt	24 kt
Beat Angles	42.0°	39.5°	37.6°	37.3°	36.9°	36.7°	37.5°	39.4°
Beat VMG	3.98	4.74	5.05	5.21	5.30	5.36	5.34	5.17
52°	5.98	6.85	7.14	7.29	7.38	7.46	7.52	7.43
60°	6.26	7.05	7.36	7.53	7.65	7.75	7.85	7.79
75°	6.46	7.19	7.64	7.92	8.10	8.25	8.43	8.49
90°	6.35	7.16	7.69	8.17	8.53	8.78	9.18	9.44
110°	6.44	7.36	7.85	8.25	8.62	8.99	10.13	10.91
120°	6.31	7.34	8.04	8.57	9.06	9.56	10.54	11.51
135°	5.70	6.96	7.74	8.56	9.51	10.51	12.12	13.82
150°	4.81	6.06	7.01	7.70	8.41	9.35	12.11	15.47
Run VMG	4.16	5.25	6.08	6.67	7.28	8.10	10.48	13.40
Gybe Angles	143.0°	146.5°	151.4°	150.3°	147.5°	145.5°	145.3°	149.3°



Time Allowances in secs/NM								
Wind Velocity	6 kt	8 kt	10 kt	12 kt	14 kt	16 kt	20 kt	24 kt
Beat VMG	905.5	759.7	712.2	691.5	679.6	671.6	673.7	696.9
52°	602.2	525.9	504.4	494.0	487.5	482.3	478.8	484.7
60°	574.7	510.6	489.0	478.0	470.4	464.5	458.6	462.3
75°	557.0	500.8	471.1	454.8	444.5	436.2	427.2	424.1
90°	566.8	503.0	468.4	440.4	422.0	410.2	392.3	381.4
110°	559.2	489.5	458.6	436.6	417.9	400.6	355.4	329.9
120°	570.4	490.7	447.9	419.9	397.2	376.6	341.5	312.9
135°	631.7	517.4	464.8	420.3	378.4	342.5	297.0	260.4
150°	749.1	594.1	513.9	467.3	428.0	384.8	297.4	232.7
Run VMG	864.9	686.0	592.6	539.5	494.2	444.4	343.4	268.6
Selected Courses								
Windward / Leeward	885.2	722.9	652.4	615.5	586.9	558.0	508.5	482.8
All purpose	686.4	578.2	531.2	503.3	481.5	461.6	429.0	411.9

Single Number Scoring Options		
Course	Time On Distance	Time On Time
Windward / Leeward	630.3	0.9520
All purpose	513.3	1.1689

Custom scoring options for United States of America

Scoring Option	TOD	TOT
Triple Number AP Low	632.3	0.9489
Triple Number AP Medium	513.4	1.1686
Triple Number AP High	454.4	1.3206
Triple Number Windward/Leeward Low	804.1	0.7462
Triple Number Windward/Leeward Medium	629.6	0.9530
Triple Number Windward/Leeward High	546.7	1.0975
Single Number Predominant Upwind	558.5	1.0743
Single Number Predominant Reaching	486.3	1.2338
Single Number Predominant Downwind	508.6	1.1798
Predominant Upwind - Low	693.5	0.8652
Predominant Upwind - Low/Med	601.2	0.9979
Predominant Upwind - Medium	548.5	1.0939
Predominant Upwind - Med/High	515.9	1.1629
Predominant Upwind - High	499.8	1.2005
Predominant Downwind Low	686.7	0.8737
Predominant Downwind Low/Med	572.7	1.0477
Predominant Downwind Medium	495.0	1.2121
Predominant Downwind Med/High	429.1	1.3982
Predominant Downwind High	378.9	1.5835
Predominant Reaching Low	620.5	0.9670
Predominant Reaching Low/Med	534.4	1.1228
Predominant Reaching Medium	475.9	1.2607
Predominant Reaching Med/High	430.3	1.3943
Predominant Reaching High	401.6	1.4939

SA/DSPL Upwind	34.73	SA/DSPL Downwind	81.23
----------------	-------	------------------	-------

Scoring Option	TOD	TOT
5-Band Windward/Leeward Low	848.4	0.7072
5-Band Windward/Leeward Low/Med	706.1	0.8498
5-Band Windward/Leeward Medium	620.9	0.9663
5-Band Windward/Leeward Med/High	559.4	1.0726
5-Band Windward/Leeward High	512.6	1.1704
Windward/Leeward 60-40 Low	853.2	0.7032
Windward/Leeward 60-40 Low/Med	715.7	0.8383
Windward/Leeward 60-40 Medium	636.1	0.9432
Windward/Leeward 60-40 Med/High	582.5	1.0300
Windward/Leeward 60-40 High	545.6	1.0997
5-Band AP Low	661.8	0.9066
5-Band AP Low/Med	566.5	1.0591
5-Band AP Medium	507.0	1.1834
5-Band AP Med/High	463.0	1.2959
5-Band AP High	431.7	1.3899
5-Band SF Bay Tour - Low	806.5	0.7439
5-Band SF Bay Tour - Low/Med	676.2	0.8873
5-Band SF Bay Tour - Medium	598.5	1.0025
5-Band SF Bay Tour - Med/High	543.4	1.1042
5-Band SF Bay Tour - High	504.7	1.1889
Chicago-Mac Upwind		1.0526
Chicago-Mac All Purpose		1.1024
Chicago-Mac Downwind		1.1609
Bayview-Mac Shore		1.0400
Harvest Moon Regatta	436.8	1.3737



Data in meters/kilograms (Metric)

HULL AND APPENDAGES (Lightship Trim)

Class	Flying Tiger 10	LOA	9.940	VCGD	-0.220
Measurement	24/12/2015	Max. Beam	2.792	VCGM	-0.180
HIN		Draft	2.272	RM Rated (kg·m)	55.5
Plan review		Displacement	2,189	Limit of positive stability(°)	N/A
Hull construction	Cored	Wetted area	17.31	Stability Index	N/A
Carbon Rudder	Yes	IMS L	9.204	Default crew weight	559
Light stanchions	No	LSM0	8.645	Declared crew weight	550
Trim tab	No	Acc. length	9.074		
		Sink (kg/mm)	13.05		

PROPELLER

Propeller Type	No Propeller
Hydro generator	No

RIG

Forestay tension	Aft	P	12.427	E	4.550
Inner stay	None Fitted	IG	12.110	J	3.680
Mast material	Carbon	ISP	13.930	BAS	1.407
Single headsail furler	No	MDT1	0.113	FSD	0.028
Mainsail furler	No	MDL1	0.162	SFJ	0.000
Articulated bowsprit	No	MDT2	0.088	SPL	
Non-circular rigging	No	MDL2	0.091	WPL	
Fiber rigging	No	TL	1.720	TPS	5.860
Adjustable mast foot	No	MW	0.126	BD	0.150
Runners/Checkstays	0	GO	0.200	MWT	
Spreaders	2			MCG	
Rotating mast	No				

FLOTATION AND STABILITY

Calculation method	RM entered directly
RM entered	55.5
Flotation Date	24/12/2015



Club
Certificate
2024

Boat
LEVERAGE
USA 83

US SAILING
1 ROGER WILLIAMS UNI WAY
BRISTOL, RI 02809
USA



MAINSAIL

<i>Id</i>	<i>MHB</i>	<i>MUW</i>	<i>MTW</i>	<i>MHW</i>	<i>MQW</i>	<i>Area</i>	<i>Meas.Date</i>	<i>Comment</i>
Main	0.15	1.15	2.01	3.21	3.97	35.96	21/09/2021	

HEADSAIL

<i>Id</i>	<i>HHB</i>	<i>HUW</i>	<i>HTW</i>	<i>HHW</i>	<i>HQW</i>	<i>HLP</i>	<i>HLU</i>	<i>Btn</i>	<i>Flying FT</i>	<i>Area</i>	<i>Meas.Date</i>	<i>Comment</i>
Medium	0.08	0.50	0.95	1.91	2.87	3.86	11.82	Yes	No	22.74	21/09/2021	

ASYMMETRIC SPINNAKER

<i>Id</i>	<i>SLU</i>	<i>SLE</i>	<i>SL</i>	<i>SHW</i>	<i>SFL</i>	<i>Ratio</i>	<i>Area</i>	<i>Meas.Date</i>	<i>Comment</i>
A2	15.75	12.95	14.35	8.49	8.42	101%	101.36	23/10/2021	